

# A. B. DICK 8800 SERIES

## Frequently Used Part Numbers

### Rollers

All units after serial number 9008-02426 have a soft rubber pan roller and a hard rubber metering roller. Units with previous serial numbers must be upgraded.

X07-0101	Form Roller, Soft (Roller w/ roll pin)
X07-0318NS	Pan Roller, Soft
X07-0401	Oscillator Roller, Hard
XSA-070201NS	Metering Roller Assy., Hard (Roller, shaft, bearings, sleeves)

### Side Frame Assemblies

XSA-010288O	OPS Side Frame Assy. (Side frame w/ bearings)
XSA-010288N	NOPS Side Frame Assy. (Side frame w/ bearings)

### Hanger Bracket Kit

XSA-STDHANGERS OPS & NOPS Hanger Assy.  
(Kit does both hangers)

### Gears

X03-121670	Form Gear (Gear w/ roll pin)
XSA-03121619	Idler Gear Assy. (Gear w/bushing, bolt)

XSA-03121624 Pan Gear Assy.  
(Gear w/ clutch bearing)

### Side Frame Bearings

(After Serial #9211-8555)  
X06-108 Sealed Ball Bearing  
(Requires qty. 4)

(Before Serial #9211-8555)  
X06-346038 Thin Flanged Bushing  
(Requires qty. 4)

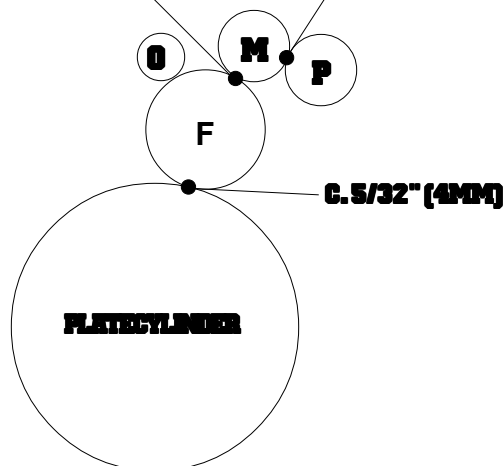
### Miscellaneous

XSA-9903	Metering Thumb Screw Assy. (Thumb screw, ratchet gear, set screw)
X09-0201	Compression Spring
X09-0105	Sequence Cam Spring
XSA-1101	Water Pan Assy. (w/ bottle bracket & pan bolts)
X99-28	Water Pan Hose
XSA-9905	Water Bottle (w/cap)
X99-61	Wash Up Bottle
X88-21	Installation Manual

**FAX YOUR ORDER  
TO ACCEL TOLL FREE!  
1 (800) 365-6510**

**B. 5/32" (4MM)**

**A. 3/16" (5MM)**



#### Adjustments

- Metering to Pan
- Form to Metering
- Form to Plate

#### Roller Description

P	=	Pan, Soft
M	=	Metering, Hard
O	=	Oscillator, Hard
F	=	Form, Soft