

A. B. DICK 9800/9900 SERIES

Frequently Used Part Numbers

Rollers

All units after serial number 9008-02379 have a soft rubber pan roller and a hard rubber metering roller. Units with previous serial numbers must be upgraded.

X07-0104	Form Roller, Soft (w/ roll pin)
X07-0303NS	Pan Roller, Soft
X07-0403	Oscillator Roller, Hard
XSA-070203NS	Metering Roller Assy., Hard (Roller, shaft, bearings, sleeves)

Side Frame Assemblies

XSA-010298O	OPS Side Frame Assy. (Side frame w/ bearings)
XSA-010298N	NOPS Side Frame Assy. (Side frame w/ bearings)

Hanger Bracket Kit

XSA-STDHANGERS	OPS & NOPS Hanger Assy. (Kit does both hangers)
----------------	--

Gears

X03-121670	Form Gear (w/ roll pin)
XSA-03121619	Idler Gear Assy. (Gear w/bushing, bolt)

XSA-03121624	Pan Gear Assy. (Gear w/ clutch bearing)
--------------	--

Side Frame Bearings

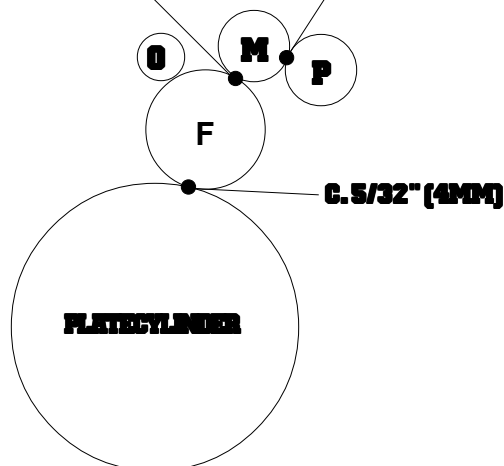
(After Serial #9211-08555)	
X06-108	Sealed Ball Bearing (Requires qty. 4)
(Before Serial #9211-08555)	
X06-346038	Thin Flanged Bushing (Requires qty. 4)

Miscellaneous

XSA-9903	Metering Thumb Screw Assy. (Thumb screw, ratchet gear, set screw)
X09-0201	Compression Spring
X09-0105	Sequence Cam Spring
XSA-1103	Water Pan Assy. (w/ bottle bracket & pan bolts)
X99-28	Water Pan Hose
XSA-9905	Water Bottle (w/cap)
X99-61	Wash Up Bottle
X88-21	Installation Manual

**FAX YOUR ORDER
TO ACCEL TOLL FREE!
1 (800) 365-6510**

B. 5/32" (4MM) **A. 3/16" (5MM)**



Adjustments

- Metering to Pan
- Form to Metering
- Form to Plate

Roller Description

P	=	Pan, Soft
M	=	Metering, Hard
O	=	Oscillator, Hard
F	=	Form, Soft