

A. B. DICK 9800 T-51® SWING-AWAY® T-HEAD

Frequently Used Part Numbers

Rollers

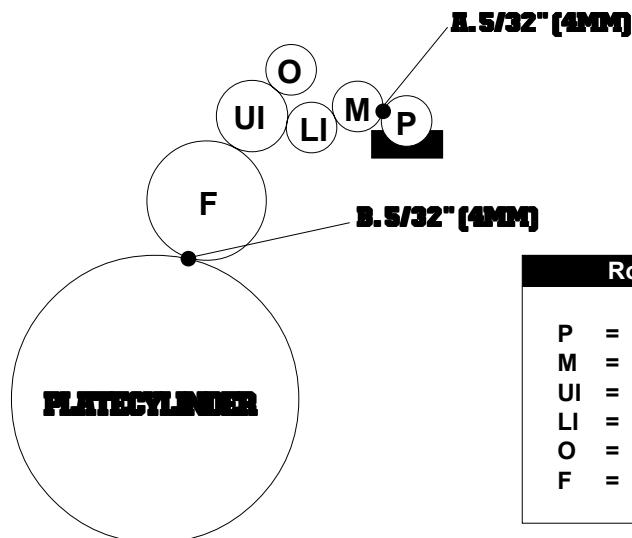
| | |
|--------------|---|
| X07-51710 | Form Roller, Soft |
| XSA-070298SW | Metering Roller Assy., Hard (Roller, shaft, collars, roll pin) |
| X07-0325NS | Pan Roller, Soft |
| XSA-070522 | Upper Intermed. Assy., Soft (Roller, shaft, E-clips) |
| X07-51750 | Lower Intermed. Roller, Soft |
| X07-0405 | Oscillator Roller, Hard |

Miscellaneous

| | |
|----------|-----------------------------------|
| XSA-1129 | Water Pan Assy. (w/ pan bolts) |
| X99-28 | Water Pan Hose |
| XSA-9905 | Water Bottle (w/cap) |
| X99-61 | Wash Up Bottle |
| X88-81 | Installation Manual |

T-51© AND SWING-AWAY® ARE REGISTERED TRADEMARKS OF TOWNSEND INDUSTRIES.

**FAX YOUR ORDER
TO ACCEL TOLL FREE!
1 (800) 365-6510**



Adjustments

- Metering to Pan
- Form to Plate

Roller Description

| | | |
|----|---|--------------------|
| P | = | Pan, Soft |
| M | = | Metering, Hard |
| UI | = | Upper Intermediate |
| LI | = | Lower Intermediate |
| O | = | Oscillator, Hard |
| F | = | Form, Soft |