

# DIDDE MINICOM, CONSERVER, MCP ALTRA

## Frequently Used Part Numbers

These part numbers apply to units after serial number 9602-17733.

### Rollers

|            |                         |
|------------|-------------------------|
| X07-0136   | Form Roller, Soft       |
| X07-0353   | Pan Roller, Hard        |
| X07-0434   | Oscillator Roller, Hard |
| XSA-070242 | Metering Roller, Soft   |
| XSA-070537 | Intermed. Roller, Soft  |

### Side Frames

|            |                 |
|------------|-----------------|
| XSA-010158 | OPS Side frame  |
| XSA-010159 | NOPS Side frame |

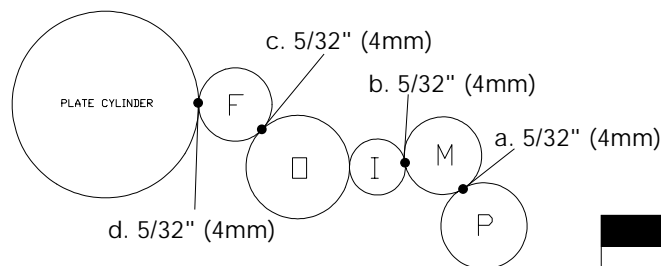
### Bearings

|         |  |
|---------|--|
| X06-101 | Sealed Ball Bearing, Pan Roller<br>(2 per dampener)  |
| X06-130 | Sealed Ball Bearing, Form Roller<br>(2 per dampener) |

### Miscellaneous

|          |                                      |
|----------|--------------------------------------|
| XSA-1143 | Water Pan                            |
| X99-90   | Water Pan Bolt, Short<br>(2 per pan) |
| XSA-2118 | Splash Shield                        |
| X99-61   | Wash Up Bottle                       |
| X88-55   | Installation Manual                  |

FAX YOUR ORDER  
TO ACCEL TOLL FREE!  
1 (800) 365-6510



#### Adjustments

- a. Pan to Metering
- b. Intermediate to Metering
- c. Oscillator to Form
- d. Form to Plate

#### Roller Description

- P = Pan
- M = Metering
- I = Intermediate
- O = Oscillator, Hard
- F = Form, Soft