

HAMADA 611/612 "E" SERIES PARENT

Frequently Used Part Numbers

Rollers

All units after serial #9012-03267 (Parent only) have a soft rubber pan roller and a hard metering roller. Units with previous serial numbers must be upgraded.

X07-0116	Form Roller, Soft
X07-0315NS	Pan Roller, Soft
X07-0415	Oscillator Roller, Hard
XSA-070216NS	Metering Roller Assy., Hard (Roller, shaft, bearings, collars)
XSA-070509	Intermed. Roller Assy., Soft (Roller, shaft, bearings, collars, roll pin)

Side Frame Assemblies

XSA-010650NO	OPS Side Frame Assy. (Side frame w/ bearings)
XSA-010650NN	NOPS Side Frame Assy. (Side frame w/ bearings)

Gears

XSA-03211538	Form Gear Assy. (Gear w/ clutch bearing)
XSA-0321152N	Exterior Pan & Form Gear Assy. (Gear w/ clutch bearing) (2 per dampener)

XSA-03211520	Exterior Idler Gear Assy. (Gear, bearing, shoulder bolt) (2 per dampener)
--------------	---

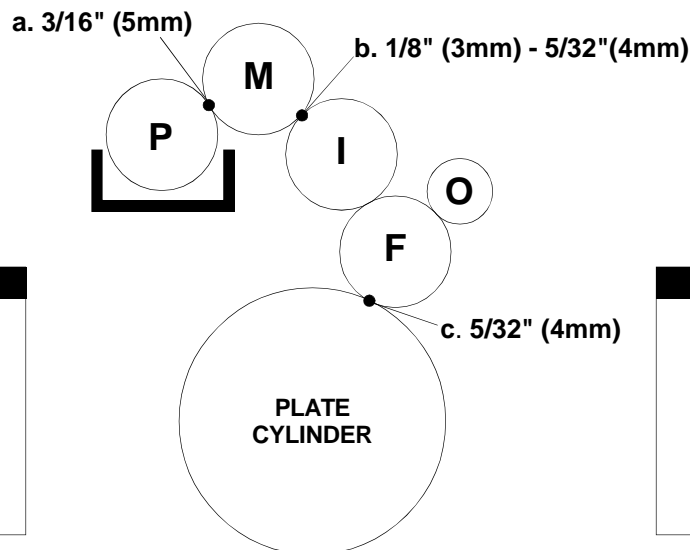
Bearings

(After serial #9211-08645)	
X06-108	Sealed Ball Bearing, Side Frame (2 per dampener)
X06-246038*	Thick Flanged Bushing (2 per dampener) *4 per dampener before serial #9211-08645
X06-103	Sealed Ball Bearing, Pivot (2 per dampener)

Miscellaneous

XSA-9903	Metering Thumb Screw Assy. (Thumb screw, ratchet gear, set screw)
X09-0101	Compression Spring (2 per dampener)
XSA-1120	Water Pan Assy. (w/ pan bolts)
X99-28	Water Pan Hose
X99-61	Wash Up Bottle
X88-27	Installation Manual

**FAX YOUR ORDER
TO ACCEL TOLL FREE!
1 (800) 365-6510**



Adjustments

- Pan to Metering
- Metering to Intermediate
- Form to Plate

Roller Description

P	=	Pan, Soft
M	=	Metering, Hard
I	=	Intermediate, Soft
O	=	Oscillator, Hard
F	=	Form, Soft